

# DUFFIELD SCENE

**Edition 196**  
**February 2009**  
**Published monthly**



*"Help Is Just a Phone Call Away"*

**JOHN A CLARKE**  
**SOLICITOR**

14 Town Street Duffield  
Tel: 01332 841115

As a member of the

**CONNECT 2 LAW™**

legal network we offer the full range of  
Private & Commercial legal services.

## GETTING BACK ON TRACK

**Passenger journeys on the Derwent Valley Line increased by 15% between April and December 2008 compared to the same period the previous year.**

Duffield station has seen a 19% increase in passenger journeys. All local stations have achieved traveller increase with other significant growth at Ambergate, Cromford, Matlock and Matlock Bath all showing more than 15% growth during this period.

CLr Joyce Sanders, Chair of the Derwent Valley Line Community Rail Partnership

said: "This is a real boost to reaching the Community Rail Partnership's target of achieving 60% growth in passenger journeys by March 2011.

"This growth has been achieved prior to the new hourly service which started on 14 December and shows that local people and visitors to the valley see the train as a great option.

"The new hourly train service between Nottingham, Derby and Matlock will hopefully see even more people using the Derwent Valley Line." Emma Knight from East

Midlands Trains commented: "It's fantastic news that more and more people are choosing to travel on our trains. Our new

hourly train service will provide many more opportunities for people to travel from Duffield to Derby and Nottingham, either for work or leisure, and we hope that over the coming year even more passengers will be tempted to leave the car at home and give the train a try!" The new hourly service along the line from Nottingham and



Derby to Matlock started on 14 December. Full details of East Midlands Trains new improved service including timetable details are featured in the latest version of Great Days Out on the Derwent Valley Line, available from Duffield Library, Duffield Post Office or call Derbyshire on 08456 058 058. Alternatively, visit [eastmidlandstrains.co.uk](http://eastmidlandstrains.co.uk).



The only MOT centre in the village. We offer full servicing and MOT facilities for all makes of vehicle at very competitive prices through our Bosch approved service centre.



Whether a new or existing customer, our levels



of service will leave you very pleasantly surprised.

**TELEPHONE 01332 843756**

Full range of vehicles available from £500 TO £150,000.

Whatever you buy our level of customer care is unbeatable.

**PLEASE CALL 01332 840272 FOR FULL DETAILS**  
**OR VISIT OUR WEBSITE AT**  
**[www.benzbavarian.com](http://www.benzbavarian.com)**



**WHY BUY FROM US?**

**We have been successfully serving local customers for 14 years.**

- All our cars are handpicked selectively for **YOU** and thoroughly safety checked
- We will MOT your car **FREE** for life (test fee only)
- All our cars are thoroughly serviced
- Service MOT and repair customers qualify for **FREE** courtesy car
- All used cars have a 30 day Exchange Option
- Fixed price servicing - simply ring us for a quote
- Customers deal directly with Carwise owners
- View our current stock of cars on our website
- **New Cars - all makes/models supplied - ask for a competitive quote.**

**Tel: 01332 840779 Fax: 01332 8432893**  
**[www.carwisederby.com](http://www.carwisederby.com)**



**DUFFIELD SCENE** All information, letters, news, articles, diary  
Established events, photographs and  
August 1992 suggestions should be

marked "Duffield Scene" and handed in at  
Duffield News, Town Street, Duffield or posted  
to: 52 Tamworth Street, Duffield DE56 4EZ.

Contacts: Barrie & Diana Eccleston (01332) 841948

**E-mail: info@duffieldscene.co.uk**

**www.duffieldscene.co.uk**

**e-mail your letters if you wish**

**mobile  
eyecare**

Independent Derbyshire  
opticians specialising in home  
visits, nursing homes & on-site  
company eye testing.

- Flexible appointments
- NHS & private examinations
- Diabetes & glaucoma screening
- FREE eye tests for all over 60s
- VDU / safety spectacles



**01332 840422** Mobile 07768 346303  
Duffield, Derbyshire www.mobileeyecare.co.uk

## ELECTRICIAN / HANDYMAN

*Duffield based*

Why use several people when one will suffice?

All electrical work certified to Part P

Tiling

Plumbing

Painting & Decorating

Television Hanging - Freesat points

No jobs too small

**Call Gavin on 07879 42156  
or 01332 843080**



## LOCAL HANDS ON

Formed seven years ago  
this highly unusual  
quartet of four pianists  
- Gillian Bithel, Peter  
Gould, Richard Hodges  
and Beate Toyka has  
delicghhed, durprised  
and entertained  
audiences in venues  
from Cathedrals to  
Piano shops and run  
popular multi-piano  
workshops foir young  
pianists.

At the invitation of  
Derby's partner city,  
Osnabruck, Germany, the  
quartet played there last  
summer.

The Derby Piano Quartet  
will play a varied  
programme at the Main  
Hall at Ecclesbourne  
School on Saturday  
February 26th starting  
at 7.30pm.

Music from Mozart and  
Weber to Brian Chapple  
and Andrew Peggie for  
four to eight hands on  
two pianos will be  
featured.

Individual tickets are  
available from John  
Norreys (01332  
**8415030**) or Anne  
Truman (01332  
**840509**).

## ABH ELECTRICAL

- All electrical installation work carried out, no matter how small the job.
- Full property testing service.
- Smoke and fire alarm installation, design and servicing.
- Emergency lighting systems installed and maintained.
- Electric Heating Systems
- Telephone points installed
- Immersion heater installation and repair

**Part P Registered Installer. Trust Mark Approved Contractor**



Tel: 01332 881972 Mobile: 07973 272981



*Give Paul a call for a 1st class professional service at a competitive price.*



## TREANORS BUILDERS LTD

Duffield

www.fmb.org.uk

Complete Service from Concept to Completion

Drawings for Planning and Building Regs available.

Worcester Bosch Accredited Solar Installer

Multi Fuel System Design Service

Tel: 01332 840296

M: 07768 012341

treanors@btinternet.com

## E. W. Roper. Bathroom Specialist.

All types of bathroom, wet room and  
cloakroom work undertaken.

Complete refurbishment. Retiling.

Showers fitted. Baths, basins, toilets replaced.

*Let me give you a quote.*

**I can undertake most jobs, large or small.**

**Call on 01773 550 686**

**Monday 16th Feb:**  
**Outing to see the snowdrops at Hodsocks Priory. Coach from Chapel Street at 10:30. Cost £10 for coach and admission.** Enjoy the carpet of flowers, see the history room in the Priory, and time also for lunch or a snack as you wish in the Priory cafe. Transport from home to Chapel Street may be arranged.  
 To book a place or for more information, please call **Lynda 840821.**

**CHEVIN PROBUS CLUB 2009.**

This is a club for retired professional & business men to get together for socialising, talks, outings, visits and occasional short holidays together.  
 Partners and wives are often included in the club's activities. The membership is drawn from Belper, Duffield and the surrounding area. The club has been based for

*Village jottings*

many years at the Conservative Club in Belper for talks and uses various local restaurants for lunches. Increasing membership has led to the club needing a larger meeting room and talks will now be held at The Lion Hotel in Belper where there is ample parking and good areas for socialising and for food & drink.

**The February meeting is a member's lunch at the Lion Hotel, Belper February 16<sup>th</sup>.**

If you are interested to try it out, come along as a guest. **Contact Eric Allen, the secretary, on (01773)823105.**

**Youth Leader Tom Wyke is the guest speaker following the AGM of Duffield Community Association on Monday 23rd February.** Tom will expand on plans for a youth club in the village and answer questions about the progress.



**By collecting unwanted change from family and friends and by many of them donating their own pocket money, the children at Forget Me Not Childcare in Duffield have raised an amazing £232.00 for Children In Need.**

Their efforts were kindly supported by local donations from our friends and neighbours on Park Road. On behalf of all the children who will benefit from their generosity we would like to say a VERY BIG THANK YOU and are looking forward to trying to beat this amount next year!

**The date of this year's Duffield Carnival is Saturday 27th June.**

There will be all the usual events up to an including Carnival Week and likely surprises as the organisers formulate plans.

People have enquired already

about offering help for the event which was a huge success last year.

Any individual / company / group wanting to participate with a stall on Eyes Meadow or play a sponsorship role should contact Derek Cook, DCA secretary on 840098.

**ABBKEY GLASS**  
 Est 1972

Abbey Glass (Derby) Ltd  
 Wetherby Road  
 Off Ascot Drive  
 Derby DE24 8HJ  
 t: 01332 371883

[www.abbey-glass.co.uk](http://www.abbey-glass.co.uk)  
[enquiries@abbey-glass.co.uk](mailto:enquiries@abbey-glass.co.uk)

**LESTER & NIX**

*50 Years in Belper*

**ALL THE LATEST PRODUCTS FROM TOP BRANDS SUCH AS**

**SONY** **JVC**  
**Panasonic**

**Hotpoint** **SIEMENS**  
**BOSCH**

**CALL IN OR Email FOR OUR LATEST DEALS**

**Email: [stevenix@btinternet.com](mailto:stevenix@btinternet.com)**

**11King Street, Belper, DE56 1PW**

**Tel: 01773 822828**

**HAWKINS**  
PLUMBING AND HEATING



Established with over 30 years experience we guarantee the highest customer satisfaction.

**Steve Hawkins**  
Tel: 01332 833265  
Mobile: 07970 638633

- Bathroom design and installation • Wet rooms • Full tiling service
- Central heating installation • Gas fires and servicing

Halls Yard | The Town | Little Eaton | Derby | DE21 5DH

**NEED A PROPER LOCAL HANDYMAN!!**  
Call David Grey's Property Maintenance

All jobs undertaken

- Plastering
- Plumbing
- Tiling
- Painting
- One Man,.....One bill
- Dripping taps
- Minor Electrics
- Carpentry
- Fencing

*"I Must get round to that job"*



01332 881 801



07724 500 204



**Now accepting new private patients. FREE six monthly examinations for children if parents register at the Practice.**

**01332 556222**

Fax: 01332 551888

www.duffieldroaddental.com  
498 Duffield Road • Allestree  
Derby • DE22 2DJ

*Amanda Hamilton*

interior design

*a fresh approach*

*.. as much or as little help as you wish..*

CURTAINS

BLINDS

SOFT FURNISHINGS

ADVICE

DOMESTIC

COMMERCIAL

Brook Cottage, 6 Tamworth Street, Duffield, DE56 4ER

Telephone 01332 842042 Mobile 07798 782092

amandahamilton845@btinternet.com



**HOLIDAY IN CYPRUS**

**Luxurious, four double-bedroom villa (sleeps nine people +) standing in its own grounds with swimming pool and overlooking the fabulous Coral Bay on the sunshine holiday island of Cyprus, now available for renting. All mod cons, including maid service if wanted. Sporting facilities nearby include three golf courses, tennis, pony trekking and historic walks. CALL FELIX FRIXOU ON 07973 639961 for information and bookings.**



Situated near the historic town of Paphos and within easy walking distance of the Kamares Club

Visit our website:

www.the cyprusconnection.com

# CUMBERHILLS SOLD OUT... FEW NEW HOMES LEFT FOR SALE

**Radleigh Homes are delighted that all of the properties at their Cumberhills development, on Cumberhills Road, Duffield have now sold.**

The superb views from this inspired development, together with the high standard of quality in construction and fittings that Radleigh are renowned for, have proven very popular with many local families, with the houses selling within three months of being released for sale and the apartments have also been equally successful. Hayley Scott, Senior Sales Manager said: "The team at Radleigh Group are always very careful in their chosen



locations and the passion and skill of years of experience combine to make our developments unique and highly sought after. "Although all of the properties at Cumberhills are now sold, there are still a

handful left in our neighboring development, at Auckland Place on New Zealand Lane.

"Anyone interested in either downsizing and releasing some equity in these challenging times, or maybe just wanting a

new start, should take time to visit our stunning show apartment which is open **Friday to Sunday from 10.30am to 5.30pm** or visit our website for more details at: [www.radleighhomes.co.uk](http://www.radleighhomes.co.uk)".

# 5ive

at 5 Tamworth Street, Duffield

## NEW STOCK JUST ARRIVED!

- ⊗ Dip Dye Scarves
- ⊗ Table Linen
- ⊗ Hand Made Quilts
- ⊗ Summer Handbags
- ⊗ Vintage Wooden Frames & Boxes
- ⊗ Fillers from 50p

**PLUS OUR BEST SELLING...**

- ⊗ Leather Belts
- ⊗ Handbags
- ⊗ Jewellery
- ⊗ Stationery

Opening Times  
Tuesday to Friday 9.30am to 5.30pm.  
Saturday 9.30am to 2pm

# NPS

## Property Maintenance

**Kitchen - Bathroom - Bedroom**  
Design - Planning - Supply - Installation

*Kitchen Makeovers*  
Work surfaces - Sink & Taps  
Doors & Drawers - Floor & Wall Tiling

*Specialists in*  
All Internal & External Joinery  
Garden Decking & Fencing  
Laminate Flooring  
Plumbing & Gas Work - Electrical Work  
Plastering & Building Work  
uPVC Windows Supplied & Installed  
uPVC Doctor - Locks - Sealed units - Hinges etc



**Registered Builder**





**Qualified**

For a Free Estimate & Friendly Advice

**01332 841234**  
**07805 841234**

# WILL...THE MEMORIES LINGER ON - AND THE FUND RAISING CONTINUES IN 2009

In September 2009, five Duffield residents will be undertaking the 'Three Volcanoes Challenge' in Italy in memory of Will Sheppard who died of meningitis in 2003.

They will be climbing Mount Etna, Mount Vesuvius and Mount Stromboli in three days. The challenge has been organised by the Meningitis Trust and each participant has pledged to raise at least £1500.

This money will be donated directly to the charity – the climbers will be responsible for their own travel and accommodation costs. Meningitis doesn't discriminate; it creeps up quickly and silently, changing lives forever. Everyone is at risk. The Meningitis Trust also changes lives by making a tangible difference to everyone touched by the disease and by raising awareness of the signs and symptoms of the disease.

Tables of ? are currently available at the Forum. Would you be prepared to be a "Table Senator" and invite another IX legionnaires to the Ball? Dress – Black Tie or Roman. Book now to avoid disappointment and – "Beware the Ides of March"!! For further information, please contact Ian 'Caesar' Grostate on **Derby 841525** Or Paul 'Brutus' Sheppard on **Derby 842310**.



## "UP POMPEII" BALL

**Saturday March 14<sup>th</sup>**  
**Pride Park Stadium**  
**Ticket Price - £35.00**  
**per head**

**All proceeds to the**  
**Meningitis Trust**

Tables are going fast and need to be confirmed as soon as possible – So waste not a minutus more.



**GODFREYS**  
**Town Street**  
**Duffield**  
**01332 840380**  
*Great*  
*Home*  
*Cooking!*

## **Evening specials** **February 14th St Valentine's**

Two courses £20 Threecourses: £25

**February 21st Italian Night**  
**March 7th: Italian Night**

**CALL US ON 840380 TO BOOK YOUR**  
**YOUR SPECIAL PARTY DATE & TIME**

### **Opening Hours:**

**Monday - Thursday 9am - 4pm**

**Friday & Saturday 9am - 4pm and 7pm - late**

**Sunday lunch: 12 - 3pm (under 10s eat FREE)**

## *Actu'Elle*

We are **Lisa Feurtado** and **Dawn Holland** and we would like to introduce you to our new salon, Actu'Elle.

We offer you the highest standard of care using quality L'Oreal products, a combined experience of 30 years and most importantly

*A passion to create*

For the past 13 years we have been employed in one of Derby's most prestigious salons and we would now like to invite you to experience the high standards of a city centre salon in a relaxed atmosphere, with the convenience of free parking.

We will bring to Duffield what we know makes truly beautiful hair.

*Join us, let us delight you with every visit*

Bring this leaflet with you and receive 15% off your first visit.

**L'ORÉAL**

20 Town Street Duffield, Tel 01332 842773  
 salon@actuelle.co.uk

Monday – Closed, Tuesday – 10am to 8pm, Wednesday – 10am to 7pm  
 Thursday – 10am to 8pm, Friday – 10am to 7pm, Saturday – 8am to 3pm, Sunday – Closed  
 A skin test is required 48 hours prior to any colour treatment

# DELIGHTS OF PAINTING HOME AND ABROAD

**New year brings new ideas and if you have thought of trying a new interest this year, then look no further than right on your doorstep.**

Duffield is a village of many interests and talents, but it is particularly well known for its 'artists colony', with two art clubs, and a gallery, as well as societies and classes encouraging various art forms.

Your chance to try your hand at painting has arrived. Margaret Allton runs daily classes in the village hall whilst her friend Wendy Tait has monthly day schools specialising in flowers at her home in Duffield

Both of them are well known artists, often exhibiting in Duffield gallery but also much farther afield.

In fact both artists equally love to travel and have

recently been to Maine USA, China and France either teaching or painting.

This year they are very excited about their teaching trip to Dinan in Brittany. Arranged in association with Travel Whispers they have found a lovely spot on the banks of the river Rance in Dinan.

Old world charm is everywhere.

Picturesque 15th and 16th century half-timbered houses with their pointed gables and wooden porches line cobbled streets, all kinds of traditional craft shops, along with a delightful selection of cafes and restaurants provide some exciting subject matter. Dinan can claim, and with great justification, to be the most perfectly preserved medieval town in Brittany.

As their trip is by coach from



• Wendy Tate and friend and fellow artist Margaret Allton

Duffield ,they say: 'It will be wonderful to be able to take all our clobber without worrying about weight and airports !!'

**If you would like to join them, either in a class call (01332 842295 ) or on the trip ( 01664 434590).**

## Duffield Decorators Ltd

01332 843954 Mobile: 0780 555 00 90

E-mail: [duffield.decorators@yahoo.com](mailto:duffield.decorators@yahoo.com)

*Reliable, local, fast and friendly City and Guilds professionals with 27 years experience*

- Domestic and Commercial • Plastering and Decorative Coving
- Wall and Floor Tiling • Insurance Work • Fully Insured
- VOC and Solvent free Eco Paints • Maintenance Contracts
- Beautiful Hand Painted Childrens' Murals
- Local / National, evenings, week-ends and night work
- Free quotes and advice

[www.duffielddecorators.co.uk](http://www.duffielddecorators.co.uk)



**BACK PAIN, SCIATICA, MUSCLE LOSS/PAIN, HEADACHES, TENSION/STRESS, ARTHRITIS, SPORT INJURIES, WHIPLASH**  
Treatment vouchers available – the ideal present for someone in pain!

**Telephone 01332 843339/07920149286**  
**127a Derby Road, Duffield.**



Enhance what nature gave you.....

Replenish what time takes away.....

**15% off for all block bookings for laser treatment in February at ADVANCED LASER CARE**

- Photo rejuvenation - to get rid of broken veins, age spots, sun-damaged skin and pigmentation.
- Laser treatment to get rid of all types of veins and hair reduction
- Treatment for acne and stretch marks
- Restylane and Injectables to treat lines and wrinkles

**All surgical procedures are carried out by Harley Street surgeons.**



## Advanced Laser Care

Derwentside, 25 Town Street Duffield DE56 4EH

Call Dr. Suzy Jacob for helpful advice & free consultation

Registered with the Health Care Commission

Tel: 01332 842233 Fax: 01332 841133

Open: Mon - Fri: 9am - 5.30pm Sat: 9am - 3pm

E-mail: [advancedlasercares@yahoo.co.uk](mailto:advancedlasercares@yahoo.co.uk) [www.advancedlasercares.co.uk](http://www.advancedlasercares.co.uk)



## Antique Furniture and Upholstery Restoration

Antique and modern furniture repaired, re-polished  
Stripping service Re-upholstery  
Carpentry and Joinery Cane and Rush seating  
Free quotes

Established 36 years Proprietor: Allan Standing  
Darley Abbey Mills, Darley Abbey, Derby.  
Tel 01332 344547 07830 877 996 (mobile).

## Edelweiss Skin Care Centre

15 New Zealand Lane, Duffield

1/2 PRICE MASSAGE.....back by popular demand!

MASSAGE-helps reduce stress & tension, improves skin texture, circulation, minimises fluid retention & promotes RELAXATION.

**BACK REFINING TREATMENT (30 mins)**

The back is exfoliated until silky smooth followed by a wonderful 25 min massage... USUALLY £21 NOW £10.50

**FULL BODY MASSAGE (60 mins)**

USUALLY £31.50 now £15.75

TEL. 842398 & use our answer phone service

\*offer avail. Wed, Fri. after 3.30pm with Millie & Sat. \*ends 27th Feb. '09 & applies to ladies only. \*cannot be used with any other offer.

## DERWENT CARS TAXI SERVICE

### IMPORTANT NOTICE

DUE TO RE-LOCATION OF PREMISES  
OUR NEW TELEPHONE NUMBER IS

**01773 824824**

**BUSINESS HOURS ARE-**

**8am MON-SAT FOR LOCAL JOURNEYS.  
24 HOURS 7 DAYS A WEEK FOR AIRPORTS.**

*"A happy New Year to all our customers"...Steve Beardsley*

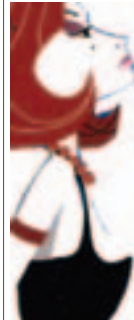
**Serving Duffield since 2003**

## ACCESS LOCKS

UPVC DOOR LOCK SPECIALIST  
ALL TYPES OF LOCKS SUPPLIED AND FITTED TO  
INSURANCE SPEC.  
FREE SECURITY ADVICE  
BURGLARY REPAIRS

**LOCAL, RELIABLE AND PROFESSIONAL SERVICE.**

PAUL HUDSON  
6 MARS DEN CLOSE  
DUFFIELD DE56 4DR  
TEL: 01332 842852



Get your nails done in the comfort of your home...

Call Samantha at  
**NAIL - ENVI**

on **07968 877495 / 01332 840855**

Trained nail technician

Nail extensions, manicure, pedicure and art work.

New Year offer: full set of beautiful acrylic nails just £20!!

Visit Samantha at her Duffield studio or she will come to you daytime, evenings or weekends.

Gift vouchers available

nail-envi@hotmail.com

Call **Alpha Electricians** today for a speedy and reliable service

For all your electrical needs around the home and garden, from simple improvements to full re-wires.

To discuss your requirements and obtain a free quote call 01332 **840432** or e-mail richard@alphaelectricians.com

*All work carried out and guaranteed under the NECEIC Domestic Installer Scheme.*

## Lloydspharmacy



Your local health authority

### FREE PRESCRIPTION COLLECTION & DELIVERY SERVICE

Free prescription deliveries to local villages including Duffield, Little Eaton, Allestree, Holbrook, Hazelwood, Coxbench and Milford.

### FREE HELP FOR PROBLEMS WITH MEDICATION

Assistance and advice about all your prescription needs



### READY TO QUIT SMOKING?

We offer counselling and support

### FREE BLOOD GLUCOSE & BLOOD PRESSURE TESTING

Drop into the Pharmacy and we'll check your sugar levels and blood pressure

### DAILY LIVING AIDS

Just sit at home and order any special needs from our extensive catalogue

### SPECIAL FOOD NEEDS

You can order gluten-free foods directly from us

### CONFIDENTIAL EMERGENCY CONTRACEPTION

Free in most circumstances

Hours: Monday to Friday. 8.30am-6.30pm. Saturday 9am-1pm.



**Lloydspharmacy**  
Your local  
health authority  
30 Town Street Duffield  
Derbyshire DE56 4EH  
01332 841175





## BALCONY, THE LOCAL JOINERY COMPANY IS EXPANDING



**Better known for its high quality traditional timber framed buildings, timber decks and balconies, locally based Balcony Timber Engineering has recently expanded its range of bespoke products and services.**

As company owner, John Thornhill, of Duffield, explains “As part of our timber building systems we offer range of products and services that increasingly we are being asked to provide separately”  
*“These include high quality purpose made hardwood doors and windows, especially*

*relevant to clients with older properties where modern “off the shelf” designs don’t fit or look out of place”.*

Equally in demand are made to measure free standing and built in cupboards and storage units.

**With a huge range of timber to choose from and no limitation on design or size requirements, Balcony can produce and install custom made joinery to suit any home.**

Founded in 1999, Balcony Timber Engineering quickly established a reputation

for innovative decking solutions especially on steeply sloping terrain.

The result is an ever growing portfolio of elevated timber decks, balconies and traditional or contemporary timber frame buildings.

*“New legislation allowing taxation benefits for those working from home has increased demand for home office annexes – ideally suited to our range of modular timber frame structures”*  
*“We build home office studios to any style or specification with numerous options on insulation, glazing,*

*heating, electrical and water supply”*  
 Some clients choose to integrate an office into the roof space of Balcony’s Beamlock range of garages – a space that lends itself equally well to a games room or overspill guest accommodation.

*“We offer a truly versatile service and pride ourselves on rising to any challenge – if it’s built with wood then there are very few things we cannot do,”* says John.

**Balcony Timber Engineering can be contacted on 0800 021 3100 or 07999 158764.**



## East Midlands Trains introduces new, hourly direct trains from Duffield

The new hourly direct service between Duffield, Derby and Nottingham means that Duffield passengers will have the benefit of an hourly service to Derby, and an hourly service to Matlock. on weekdays, services will go through to Nottingham, resulting in an hourly service between Duffield and Nottingham.

Copies of the new 'Great Days Out on the Derwent Valley Line' timetable and days out guide are now available from Duffield library, Duffield Post Office, Tourist Information Centres, staffed stations or from Call Derbyshire on 08456 058 058. Passengers can also register to receive their own personalised timetable when full details are released. Register now on

[eastmidlandstrains.co.uk/myj](http://eastmidlandstrains.co.uk/myj) ourneys.

1) Through services between Duffield and Nottingham will run on Saturdays from **May 2009**.

The Saturday service has a delayed start because of the rebuilding of Derby station which is being undertaken by Network Rail.

2) East Midlands Trains operate high speed long distance services from

London St. Pancras to Sheffield, Derby and Nottingham and regional services between Nottingham and Derby – Lincoln – Cleethorpes – Skegness, and between Derby and Crewe - Matlock and Norwich and Liverpool.

The franchise will run until 31 March 2015, the last year and four months of which will be conditional upon achieving pre-set performance targets.

## DJ PLASTERING & BUILDING WORKS

Full House/Room Reskims & Repairs  
Stud Partitions & Knock-Throughs.  
Rendering & Pebble Dashing.  
Dry Lining, Plaster Boarding.  
Skirting Boarding & Door Arcatraving.

General Property Repairs. Alterations & Renovations.  
Free Quotes & Insurance Work. Available at Short Notice.

**Friendly & Reliable.**

TEL: 01773 540231 MOBILE 07985 589038

Peter Upton  
The Painter and  
Decorator

242 Duffield Road  
Derby DE22 1BL  
Telephone 01332 200178  
Mobile 07944 045937

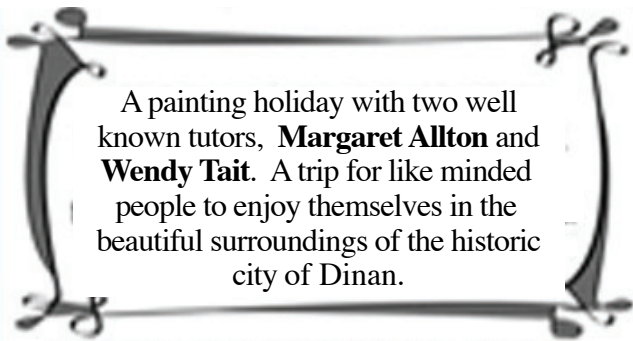


**The Rotary Club of Belper and Duffield held a special Presentation Evening for local charities, individuals and organisations Eight organisations received cheques totalling £1750.00.**

They ranged from a donation to local student Katie O'Connor to assist with funding for her National Youth Theatre training to funding for developments at the Happy Homes Orphanage in Kenya – a project that the club has been supporting for some time.

Local charities including Belper Social Club for the Disabled, The Gold Digger Appeal and Phoenix Futures also received donations. President Gail Ashley with recipients at the Presentation Evening

**PAINT-ALONG-WITH US..Dinan, Brittany**



A painting holiday with two well known tutors, **Margaret Allton** and **Wendy Tait**. A trip for like minded people to enjoy themselves in the beautiful surroundings of the historic city of Dinan.

- Local pick up from Duffield, Allestree & Derby
- Inside cabin on outbound ferry journey only
- Welcome drink and introduction at our hotel
- Five nights accommodation at selected 3\* hotel
- Five breakfasts lunches, dinners in France
- Excursion to historic city of Rennes
- Four days painting tuition
- Evening discussion and works reviews

**Departs 31st May 2009 - seven days fully escorted**

£1,129 per person based on share . Single supplement £117

Non painting partner £989

Optional excursions at additional cost.

TO BOOK: Phone 01664 434590

info@travelwhispers.co.uk

TRAVELwhispers



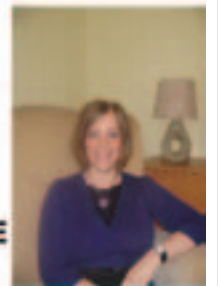
**A UNIQUE NEW SERVICE**

**TELEPHONE COUNSELLING**

**Counselling at YOUR CONVENIENCE**

**NO PROBLEM TOO BIG OR SMALL**

- AFFORDABLE
- CONFIDENTIAL
- ACCESSIBLE
- NO TRAVEL
- NO CHILDCARE TO ORGANISE



**HELP NOW JUST A PHONE CALL AWAY**

**24HOURS A DAY, 7 DAYS A WEEK**

**01335 344281**

**Save £££££s on your heating bills by power flushing your system.**



- Cures flow and circulation problems
- Restores system efficiency and heat output
- Cleans whole system • Prevents corrosion
- Minimises boiler noise

• A one visit power flush could save you the price of a new system and will reduce fuel costs.

**NEALSON'S PLUMBING AND HEATING SERVICES**

01773 550071 / 07957 362 965 / 077 699 40763

- Central Heating Specialists • Boiler servicing and repairs
- Landlords' gas safety checks • Natural gas and LPG
- OFTEC approved for oil • Solar hot water systems
- Specialists in renewable energies • Heat pumps
- All types of plumbing work and maintenance

*Local family run business, based at Windley, with over 40 years experience.*



185253



**BRANCH OFF TREE SERVICES**

Every type of tree work carried out

- big and small

All work carried out to BS3998 (British standards).

Fully NPTC certificated and insured.

We also supply seasoned hard wood logs and wood chippings

**CALL: 07855 607 203 or 01335 370 946**

www.branchofftreeservices.co.uk e-mail: marks\_oliver@yahoo.co.uk



**Pride Plumbing Services Limited**

Suite 11, 25 Town Street, Duffield, Derbyshire, DE56 4EH  
www.prideplumbingservices.co.uk

- We specialise in:**
- Central Heating • Boiler Installations • Bathroom Suites
  - Servicing and Landlords' Certificates
  - Taps & Valves • Unvented Hot Water Units



*All work undertaken and guaranteed*

**Free Quotations 24 hour call out.**

213086 Tel: 01332 842288 Fax: 0560 113 2840

**Anthony: 07832 218 516 Mark: 07980 989 161**

**IRONING**

\* Free Col/Del to All Areas

\* Fully Insured

\* Serving area for over 10 years

\* Home or Office Collections

\* Charged at just £3 per KG.

\*\* 20% Discount on All First Collections \*\*

Save Time & Stress call Pressed Express !!

Tel : 01332 219006 Mob : 07535 671244

www.pressedexpress.co.uk



**CHRIS THOMPSON BUILDING**

**Design and Construction**

All building work considered

*Reputable local company*

*based at Little Eaton*

**07801 631815**

**BALCONY**  
TIMBER ENGINEERING

Beautiful hand crafted balconies, decks & viewing platforms



Superb Beamlock Green Oak style, garages, garden rooms & home offices - full Beamlock design, supply and installation service available

15 Makeney Road, Holbrook, Belper, Derbyshire DE56 0TZ  
Tel +44 (0)800 0213 100 or +44 (0)7999 158764

enquiries@balcony-timber.co.uk  
www.balcony-timber.co.uk

# TEENAGE HELP SOUGHT AT LIBRARY

**Calling all teenage readers... we need your help,**

The Duffield library bookpushers are recruiting new members.

We are looking for young people willing to join our group.

We meet once a month in the library after school to push books and reading to each other and like minded groups in the county.

Some trips and visits are organised and full training is given.

If you, or anyone you know, might be interested in joining us please contact me at the library for more information and an informal chat.

Events at the library continue as usual.

Our normal story time for under 5s will be held on **Friday 6<sup>th</sup> February and Friday 20<sup>th</sup> February at 10.30** for half an hour of stories and simple crafts.

I would like to thank all children and carers who have been attending and for helping to make the story times such a great success.

From **10am on Monday February 2<sup>nd</sup>** the Energy Trust, an organisation set up to address the damaging effects of climate change, will be visiting the library to hand out advice to the public on topics ranging from home energy efficiency to eco-driving techniques.

This will be a drop in session so come along and take onboard their energy saving information.

My best read of the month was **Good Wives** by **Margaret Forster**. This is a fascinating read comparing the marriages of Mary Livingstone, Fanny Stevenson, Jennie Lee and Margaret Forster. The author explores the four marriages in different times finding out what it means to be a good wife.

A compelling and highly readable story.

Happy reading

**Carole-Ann  
Duffield Library**



by  
*Carole Ann Howard*

**Dear Barrie and Diana  
Thanks for covering  
this difficult subject of  
Ecclesbourne School in  
recent editions.**

For many people in the village the proposals from Ecclesbourne School pose a real dilemma.

We want to see sports facilities at the school improved, but at what cost?

## *Reader's Letter*

Are the new facilities worth the loss for ever of the open space around Meadows School and the riverbank access? People are poorly informed about the proposals.

Could you include a map in your February edition showing the extent of the land it is proposed to

build housing on, the location of access roads and the position of the new playing fields? This would inform the debate and provide a really helpful community service.

Thanks.

**Yours sincerely  
Kevin Curley**  
6 Cumberhills Road  
Duffield  
01332 840357

**Editor's reply:  
Thanks for your  
suggestions Kevin and  
you can rest assured  
that I am trying to pin  
down the relevant  
information.**

It is unlikely that specific detailed mapping will be available for some time - at least that is what I am told. This story is likely to drag on for a long time.

## **SEW EASY**

**Sewing Alterations and Ironing Service**

<p><b>Sewing Alterations:</b></p> <ul style="list-style-type: none"> <li>Replacement Zips</li> <li>Repairing and Taking in Seams / Waistlines</li> <li>Repairing and Shortening Hems and Sleeves</li> <li>Tapering Trousers / Skirts / Dresses</li> <li>Curtains Taken Up / Down</li> </ul>	<p><b>Ironing Service:</b></p> <ul style="list-style-type: none"> <li>50p Per Item</li> <li>40p Children's Clothes</li> <li>75p Shirts</li> </ul>
---	---

Quick, Professional and Friendly Service  
Reasonable Rates, Anything Considered  
Local Collection and Delivery Service Available

All Enquiries to:  
**Sandra Hudson 01332 842852 / 07791 737878**





## Duffield & District Funeral Service

Granting Every Last Request

# 01332 840 840

For a 24 Hour Professional Service

**James Cullen** MBIE Dip.FD LMBIFD  
*10A Meadow Vale Duffield Belper Derbyshire DE56 4 DG*



Domestic and Commercial  
Plumbing & Gas Engineers



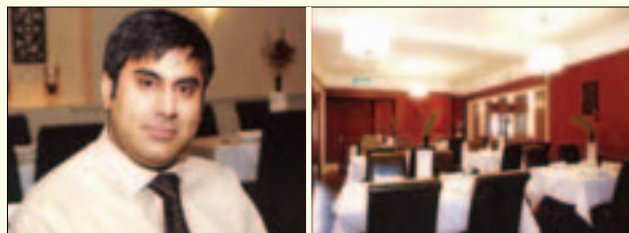
Tel: 01332 600746  
Mobile: 07958 646576  
p.shakeshaft @ntlworld.com



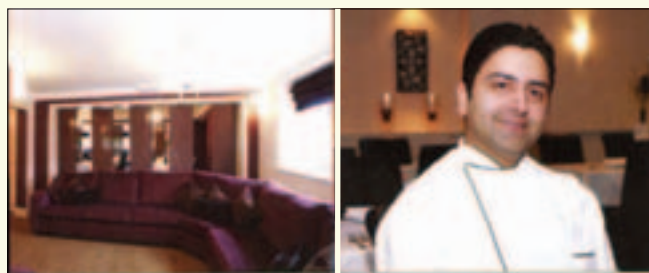
Proprietor  
Mr Peter Shakeshaft



17 New Zealand Lane, Duffield, Derbyshire  
Telephone: 01332 841156

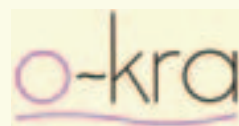


Ali, Front of House manager



Mahaneshwar Pal Head Chef

## EARLY DINING SPECIAL at



### Special offer for 2009

# 20% off meals served

between 5.30-7pm Monday to  
Thursday inclusive

also fabulous three course meal for £14.95.

**NOW CLOSED ON SUNDAY EXCEPT  
FOR SPECIAL EVENT BOOKINGS**

For enquiries / bookings call 01332 **841156**

or Sadique mobile **07980 018 033**

*Authentic Indian Cuisine*

LEARN TO DRIVE WITH

# R J T

DRIVING TUITION

LOCAL PATIENT AND FRIENDLY INSTRUCTOR  
RICHARD TRENEER DSA ADI  
LOCAL PICK UP FROM HOME, SCHOOL OR WORK  
FULL HOUR TUITION  
LONGER LESSONS AVAILABLE

CALL THIS NUMBER TO BOOK YOUR LESSONS  
01332 842322  
MOBILE: 07767 668992

Our Farm Shop & Cafe at your service

**OPENING HOURS**  
Tues - Sat  
9.30am - 6pm  
Sundays and Bank Holidays  
10am-4.00pm  
**MONDAYS CLOSED**

*"We're passionate about quality and freshness - Because, we know you are too."*

**FRESH FRUIT AND VEGETABLES, HOME PRODUCED LAMB, FREE RANGE EGGS, FRESHLY BAKED BREAD, HOME MADE CAKES, ORGANIC PRODUCE, LOCAL ICE CREAM.**

[www.croots.co.uk](http://www.croots.co.uk)  
**01332 843032**  
**E-mail: info@croots.co.uk**  
Farnah House Farm, Wirksworth Road, Duffield

**ECCLESBOURNE SCHOOL PARENTS STAFF AND FRIENDS ASSOCIATION**

**PLEASE CAN YOU HELP THE SCHOOL TURN**

## **'Rags To Riches'**

**ONCE AGAIN WE ARE COLLECTING ANY RAGS, CLOTHES, BEDDING, CURTAINS, SOFT TOYS, PAIRED SHOES, BELTS AND BAGS, WHICH WILL BE RE-USED IN UNDERDEVELOPED COUNTRIES.**

**THE MORE IT WEIGHS – THE MORE IT PAYS!**

**IF YOU CAN HELP, PLEASE BRING YOUR BAGGED GOODS TO THE SCHOOL IN WIRKSWORTH ROAD, DUFFIELD, FROM 8am to 9am on**

**FRIDAY FEBRUARY 13<sup>th</sup> 2009**

**(OR IF YOU PREFER UP TO 48 HOURS PRIOR)**

**THANK YOU VERY MUCH**

**FOR BAGS, COLLECTIONS, OR ANY OTHER HELP PLEASE CALL JOHN, 01332 841085**

# FIRE WOOD

Kiln dried pine chunks  
and  
Seasoned hardwood logs  
All cut to size for stoves

£50.00 per ton bag

**FREE DELIVERY!**

Tel 07798 782092

Balcony Timber Engineering  
[www.balcony-timber.co.uk](http://www.balcony-timber.co.uk)

**Hello**

**I wondered if you could help answer a question that has been nagging my family, friends and neighbours this Christmas?**

The tree that was erected on the corner of Wirksworth Road? Christmas Tree? We are really not sure this represents the village well at all!!

I have never seen such a poor effort in the whole of my life, one string of lights thrown across the top and its been left like that since the start of December. The tree has been standing crooked, but this is irrelevant compared to its decoration.

I know there is a credit crunch going on, but when villages like Milford can make their streets look pretty and manage to have a lovely tree opposite the Strutt Arms, how can an affluent village like Duffield not afford a tree full of lights?

This is really puzzling us and i cannot count how many people have commented on how bad it looks? Were the lights

## *Readers' letters*

stolen? Could the villagers not have dug into their box of spare decs and donated any spare lights?

This really is a terrible excuse of a tree, can you shed any light? (more than the lights on our village tree this year anyway)

**Warmest Regards  
Helen**

**Dear Helen  
The editor, being aware of my involvement with the erection of Christmas Trees in Duffield for at least 20 years, has asked me to respond to your letter at the time of publication.**

First of all thank you for your comments regarding the decoration of the tree which were echoed by others. The lights used this year were donated by a resident and were the third different set used on consecutive years. In 2006 the string of multi coloured 25 watt bulbs that had been used for many years was installed. Over the first night 15 bulbs were removed and smashed on the ground. These were duly replaced for 8 more to be smashed the following night. The lights were then lifted up the tree out of easy

reach but the effect was then very disappointing. There was also a safety issue as live lamp sockets could be left exposed. In 2007 four large nets of low voltage bulbs were purchased but these were not easy to spread around the tree even though they survived those with destruction in mind.

The overall effect was not ideal, the lights again being concentrated towards the top of the tree.

When the lights used this year were offered it was reported that they were very effective when used at a residential site.

With hindsight the tree could have been smaller and there would certainly not be as much ambient light as on the Corner.

Even so thanks to those that hang around on the corner most of the bulbs within reach were broken or missing which didn't help the overall impression. The lovely tree at Milford is up on a bank that doesn't encourage groups to gather and apparently escapes the attention of those with mischief in mind. I think you will find that the other lights in Milford are part of the seasonal decorations erected by Belper Town Council.

Those involved with Duffield's efforts have already started consultations with Amber Valley Borough Council that erects many trees around the Borough. One solution might be a fence around the tree if it is decided that we won't be beaten by the mindless few. Over the years we have only had to pay for one big tree, the remainder having been removed from resident's gardens at no cost to them. Unfortunately some trees grow with a curve that leads to a slight lean when installed.

The trees are far too heavy to lift to make adjustments once they are in place. In summary Helen, we hear what you say but the problem is not money, the Duffield Community Association with support from Duffield Parish Council will continue to fund all the decorated trees that are erected around the village. The problem is certain residents and their friends that are not so proud of where they live as we are. We are determined not to let them win and will welcome any further suggestions from you, your family and neighbours.

Yours sincerely  
**Derek Cook  
Hon. Secretary DCA**

### **AFFORDABLE ACCOUNTANCY**

**Ambitious?**

**Want to be your own boss?**

**Want to set up your own business?**

**Paying too much for your Accountancy  
Taxation / Business Consultancy Advice?**

**Qualified accountant will advise you one to one  
in your own home**

**FIRST HOUR FREE - £24 PER HOUR THEREAFTER**

**Don Dexter F.C.M.A.**

(Ex Financial Director Jaeger Knitwear)

**01773 830642 or 07950 566055(mobile)**

## **Castle Computing Home & Business Computers**



**Broadband  
Internet Sharing  
Repairs and Upgrades  
1 to 1 Tuition  
Anti-Virus**

contact

**Gerry Fisher  
01332 841361**

Email **Gerry@CastleComputing.co.uk**



# Duffield Parish Council Newsletter - Issue No.66 (February 2009)

## COUNCIL SETS IT PRECEPT

Following a meeting of the Parish Council on 13<sup>th</sup> January 2009, members agreed to raise monies through the annual precept.

The amount to be raised for 2009/10 is £96,485.

The Precept is the amount that is charged on your rates for the services provided locally by the Parish Council.

This rate amounts to a weekly charge of approximately £1.00 for a band E properties, with lower band properties paying much less.

The monies raised through the precept helps to provide funding for local amenities such as Eyes Meadow, Gray Recreational Ground and Duffield Cemetery, as well as the provision of a Cemetery Superintendent, Village Warden and office staff to deal with your enquiries.

Included on our portfolio of responsibility are four properties, three of which are listed buildings.

In addition to these assets the Parish Council also undertakes clearance work on some local footpaths and maintains and provides bus shelters, seats and litter bins around the village.

Last year the Parish Council carried out a number of major projects including the refurbishment of the playground at Gray Recreational Ground, the resurfacing of the parking bay at the Cemetery and demolition and tree work at Eyes Meadow.

On a smaller scale, the bus shelter on Wirksworth Road was refurbished and sandbags and sand was purchased to help the village in times of flood.

These are just some of the things we have been doing, and the Parish Council continues to look forward to ensure the best service possible to the village.

**Going forward the Parish Council are already planning next the year projects.**

**Car park improvements at Eyes Meadow, repairs to the wall at Gray Recreational Ground, and improvements and the expansion of allotments at the cemetery are amongst the list of proposed projects for the Spring.**

As you can imagine, with so many projects and a very tight budget the Council is continually looking at how it can best utilise its funding.

We endeavour to ensure that the contributions made by the village to its work are used as efficiently and effectively as possible, with value for money a key driver.

\*\*\*\*\*

## AWARDS TO LOCAL GROUPS

**The Parish Council is keen to support local groups and organisations that provide services to the community on a not for profit basis.**

The Parish Council does this by awarding small grants to these groups on an annual basis under the mechanisms granted to it under s137 of the Local Government Act 1972.

This year the Parish Council has made awards to the 1<sup>st</sup> Duffield Rainbow Guides, to help them with resource provisions :to Duffield Lawn Tennis Club to support their youth community engagement programme, and : to Choose Cycling to support the delivery of cycle training to adults in the community.

## PARISH COUNCIL MEETING DATES

The Parish Council will be holding the following meetings at the Committee Room on Hazelwood Road to commence at 7.00pm.

All meetings are open to the public and Parishioners may bring items of concern to members' attention prior to the commencement of the meeting.

**Tuesday February 10<sup>th</sup> 7.00pm Parish Council**

**Tuesday January 27<sup>th</sup> 7.00pm Cemetery Committee**  
(re-scheduled from 27<sup>th</sup> January 2009)

**Tuesday February 24<sup>th</sup> 7.00pm Recreational**

\*\*\*\*\*

## CONTACT INFORMATION

**County Councillor for Duffield : Mr. Patrick Clark**

**At County Hall** 01629 580000 ext 6022

**Home Phone** 01335 350138

**Email** [Patrick.Clark@derbyshire.gov.uk](mailto:Patrick.Clark@derbyshire.gov.uk)

\*\*\*\*\*

**Borough Councillors for Duffield:**

**Mr. Stuart Bradford**

**Home Phone** 01773 550828

**Email** [stuart.bradford@virgin.net](mailto:stuart.bradford@virgin.net)

\*\*\*\*\*

**Mr. Chris Short**

**Home Phone** 01332 843781

**Email** [derbyshiresHORTS@aol.com](mailto:derbyshiresHORTS@aol.com)

\*\*\*\*\*

**Parish Councillors for Duffield**

**You can contact your Parish Councillors through the Parish Office at the Weston Center, Tamworth Street, Duffield, DE56 4ER  
Tel: 01332 842740**

**Derbyshire County Council: 01629 580000**

**Amber Valley Borough Council: 01773 570222**

**Dog Warden 01773 841335**

**Police non emergency 0845 123 3333**

\*\*\*\*\*

**If you have any comments regarding the work of the Parish Council or would like to speak directly with the Clerk please note the Clerk is still available every Monday and Wednesday morning at the Weston Centre between 10am and 12am.**

No appointment necessary. (Closed for Bank Holiday).  
**PLEASE USE THE BACK ENTRANCE OF THE CENTER TO ACCESS THE PARISH OFFICE**

\*\*\*\*\*

**You can Contact the Clerk , Sally Bygraves on 01332 842740 mon-wed during office hours or in an emergency on 07836244818.**

**You can also contact the Parish Council via email us through the contact button at [www.duffieldpc.org.uk](http://www.duffieldpc.org.uk)**

# HAZARDS MOUNT AS CREDIT SQUEEZE BITES

These are some topical items I have been informed about by the Belper & District Neighbourhood Watch Support Group and the police.

**A Reminder:** A recent incident in the the county concerned a caller claiming he was from the water board and needed to come in to change the battery in the water meter and that they should have received a letter to confirm this prior to arrival.

As always never allow anyone into your home unless you are sure of their identity. If you have any concerns do not hesitate to tell them to leave. A legitimate caller will not mind.

**A Warning:** It has

**been reported that there has been a significant increase in burglaries as a result of the economic crisis.**

Everyone is feeling the pinch including burglars and thieves! Please keep all doors and windows locked even when you are inside.

**Another Warning:** A man came over and offered his services as a painter to a female putting petrol in her car and left his card. She said no, but accepted his card out of kindness and got in the car. The man then got into a car driven by another man.

As the lady left the service station, she saw the men following her out of the station at the same time. Almost immediately, she started

to feel dizzy and could not catch her breath. She tried to open the window and realised that the odour was on her hand; the same hand which accepted the card from the man at the service station. She then noticed the men were immediately behind her and she felt she needed to do something.

She drove into the first driveway and began to honk her horn repeatedly to ask for help. The men drove away but the lady still felt pretty bad for several minutes after she could finally catch her breath.

Apparently, there was a substance on the card that could have seriously injured her. This drug is used by people who wish to incapacitate a victim in order to steal from or take advantage of them.

This drug is four times more dangerous than the date rape drug and is transferable on simple cards. So take heed and make sure you don't accept cards at any time when alone or from



someone on the streets. This also applies to those making house calls and slipping you a card when they offer their services.

**Police Non-Emergency telephone number change:** From 1st December 2008, the number for contacting Derbyshire police changed to: 0345 123 3333. This is to ensure callers are not charged excessively when making a call. The old number will continue to be operational for about 2 years until people are familiar with the new number and then phased out. This number is for any policing matter which is not a 999 emergency.

## Snake Lane Design

Creative Design Solutions for Print & Web

Graphic design

Web design

Exhibitions

Corporate identity

Advertising

Print

0870 777 1842

www.snakelane.co.uk

Derwentside 25 Town Street Duffield Derbyshire DE56 4EH

Microsoft CERTIFIED

PC-BMI Est. 2000

Build - Maintain - Instruct IWA

Your Local Computer Specialist

\*\*\* Systems - Laptops - Multimedia PC's - HDTV \*\*\*

Tel: 01332 840570 - www.pc-bmi.co.uk

**DYNAMICS DRY FUSION**  
*"Imagine if you could have your carpets cleaned - sanitised - anti-microbial treated - dupont soiled blocked and dried in 30 minutes"* You can by calling  
**0800 849 6322 DYNAMICS DRY FUSION**  
*Number 1 for customer satisfaction*  
**35 Hall Farm Road - Duffield**

## CONCERTS ON THE WAY

A concert featuring the Houghton Weavers is to be held at Ecclesbourne School on 28th March 2009.

The doors open at 6.45pm for a 7.30pm start.

This is the fourth year the Houghton Weavers have performed for the Rotary Club of Belper and Duffield and others and the event is always a sell-out,

Anyone wanting tickets is advised to contact either Ian Samways on 01332 516114 or Gail Ashley on 01773 823357.

Tickets are £10 each

with no concessions. There will be a bar.

On April 25th a concert is to be held at Derby Cathedral (by kind permission of the Dean and Chapter) featuring the Dalesmen Male Voice Choir, Derwent Brass and the internationally acclaimed blind singer Denise Leigh.

Admission of priced at £15, again with no concessions, and the concert starts at 7.30pm.

Tickets are from Gail Ashley (01773 823357).

## WHITE HART - DUFFIELD 01332 – 841141

Available:-

Mon – Sat Lunchtime 12pm – 2.30pm

Mon – Thur Evening 6 – 9.30pm

Choose from one of the following:-

Glass of house wine

Soup of the day

Simple jam sponge & custard

Apple & blackberry crumble & custard

With one of the following:-

Roast of the day, Yorkshire pudding, roast potatoes & vegetables

Beer battered cod, with fat chips and mushy peas

Sausage & mash with onion herb gravy

Gnocchi, tomato, black olives, garlic & shaved gran pandano

...also includes coffee



The Central Operatic Society, a not for profit organisation will be performing the musical “Merry Widow” at Landau Forte College, Fox Street, Derby on March 10-14th.

The performances of the Merry Widow, lyrics by Phil Park and music by Franz Lehar, will commence each night at 7.15pm with a Saturday matinee starting at 2.15pm Tickets can be obtained from Mrs Laura Taylor on 01332 366279.

Any further information can be obtained from:

Jean May (01332 512965) or Robert Towle (01332 366279)

## HOCKEY: ANOTHER GIRLS' TRIUMPH

### Ecclesbourne School won Midlands Under 16 Schools Championship for fourth successive year.

The School have once again qualified for the National Under 16 Schools Hockey Finals in March following their 5th consecutive win in the Midlands Championships.

The regional round, held at King Edwards School, Birmingham, saw a plethora of goals being scored by Anna Toman, Charlotte Hobbs, Rhiannon Rogers, Tasha Webb and Charlotte Bright.

In their group games they beat:

King's School Worcester 5-0

Ellesmere College 5-0,

Edgbaston High School 3-0

Rugby School 6-1.

In the semi-final Bedford High School were beaten 5-2 and in the final, Oundle provided strong resistance but finally succumbed to the speed and skill of the Ecclesbourne players with a 5-1 score line.

The team will now try to add to their four previous successive National Under 16 School titles to add to the Under 14 crown won five years ago.

This year's finals are being held at St. Georges School, Surrey on Monday 9<sup>th</sup> March.

## SPRINGWOOD HOUSE



### Private Residential Care Home for the Elderly

Duffield Bank, Duffield, Derbyshire DE56 4BG

Variety of care packages: a permanent room to make your own, convalescent, respite & holidays

- 24 hour care by highly trained and experienced staff
- Home cooking, special diets & preferences catered for
- Two state of the art passenger lifts accessing all floors
- Visiting chiropody/optician/hairdresser & assistance with dental appointments.
- Ramp access to the landscaped gardens, fish pond & summer house.
- Entertainment, charity events and regular theatre trips

For a brochure / more information please call 01332 840757

*Food is divine,  
cooking is an art  
We believe in both...*



*Viceroy* Tamworth Street Duffield  
Telephone 01332 841111

Bookings now being taken for  
St Valentine's Day  
[www.viceroy.uk.com](http://www.viceroy.uk.com)

# *Viceroy*

Come in now and sign for your Loyalty  
Card (for Duffield residents only) which  
gives an exclusive 20% discount.\*

Two for one meals at Early Bird  
5pm - 7pm Monday to Friday

also  
Visit *Viceroy Rest*  
Midland Road, Derby  
(01332 209991)

\* all offers operate separately